

Autumn 2016

LSCB NEWSLETTER

IN THIS ISSUE:

- Re-launch of Pan Cheshire Safeguarding Procedures
- Launch of the refreshed Continuum of Need (CoN)
- Pan Cheshire Escalation Policy
- CWAC LSCB Serious Case Review – Child B.
- What's New

PAN CHESHIRE SAFEGUARDING PROCEDURES

The [Pan Cheshire Safeguarding Children Boards Procedures](#) were refreshed and relaunched in July 16. The new-look Tri-X procedures now house all of our local and Pan Cheshire multi-agency guidance and procedures for ease of reference. All procedures are compliant with Working Together 2015 and contain the relevant information to support staff working in Cheshire West and Chester, and across the wider Cheshire footprint, to manage a wide variety of safeguarding concerns.

The following link offers support to staff in navigating the new procedures.

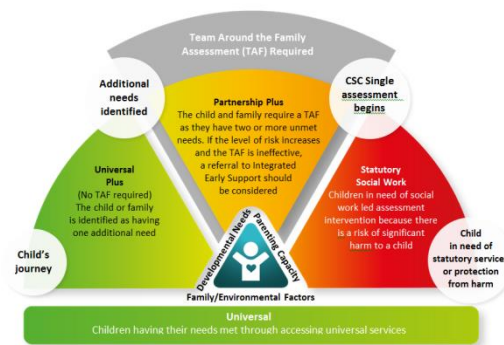
[Using the manual](#)

Please ensure you decommission any hard copies of existing LSCB procedures which may now be outdated and familiarise yourself with the new ones.

The Manual is updated every six months and we are keen to receive your feedback about the usability and current contents to inform any future revisions. Is there anything else you want to see included or which requires further clarification? Work is already underway on the next update which is due to go live in December 2016, please send any feedback or comments to LSCBWest@cheshirewestandchester.gov.uk



LAUNCH OF THE REFRESHED CONTINUUM OF NEED



The Continuum of Need (CoN) is changing! Following extensive consultation with frontline professionals and strategic leads our refreshed CoN is **launching on 13th October 2016**.

In an effort to continue building on the positive multi-agency practice evident in Cheshire West, the changes made are geared towards driving even greater joined-up working at the earliest possible opportunity for intervention.

Based on frontline feedback we have sought to achieve greater continuity of approach – aligning our language with that of the Health Visiting Programme – which shares our objective of strengthening wider partnership working, e.g. across housing, early years, etc. to ensure that needs are met efficiently and effectively. The new continuum also reinforces the need to consider a “Think Family” approach when providing help and support to improve outcomes for children and young people.

To find out more about the changes, please join us at one of the following briefing events.

Drop-in briefing sessions (NO NEED TO BOOK JUST TURN UP & SIGN IN):

13th October, 12 – 1.30 pm or 3.30 – 5.00 pm Civic Suite, Civic Hall, Ellesmere Port

14th October, 12 – 1.30 pm or 3.30 – 5.00 pm Council Chamber, Wyvern House, Winsford

14th November, 9.30 – 11.00 am or 12.00 – 1.30 pm G1, HQ, Chester

If you have any questions about the changes following your attendance at a briefing session you can contact us via LSCBTrainingandEvents@cheshirewestandchester.gov.uk



PAN CHESHIRE ESCALATION PROCEDURE

In May the LSCB re-vised and re-launched its [Escalation Procedures](#). The procedure has since been endorsed on a Pan Cheshire basis and now can be found within the Pan Cheshire Procedures.

All staff should appraise themselves of the pathway to resolving disagreements between professionals, and it is good practice for Managers at all levels to test that there is a good understanding of the procedures amongst their workforce.

KEY MESSAGE FROM THE LSCB: *Problem resolution is an integral part of professional cooperation and joint working to safeguard children. Professional challenge can be positive, it demonstrates that professionals are willing to consider different perspectives and escalate matters that they do not feel will result in positive outcomes for the child or young person. It is only dysfunctional if not resolved in a constructive and timely fashion.*

PUBLICATION OF SERIOUS CASE REVIEW – CHILD B

In August 2016 the LSCB published its independent serious case review following the death (apparent suicide) of Child B (referred to by the pseudonym name Bryony throughout the report).

The review findings fall within the following areas:

- Professional understanding in relation to risk and vulnerability
- Working with troubled adolescents
- Coordinated multi agency planning and the role of the Care Plan
- Listening to and being guided by the voice of the child
- Managing family dynamics; family consultation
- Appropriate use of assessment tools and statutory powers
- Responding to serious incidents and crises
- Single and multi-agency communication and information sharing systems

Bite-sized briefings aimed at sharing the learning from this review and that of Child A (learning linked to Neglect & Emotional abuse) which was published in March 2016 continue. The next one is on 7th December 2016 – please bring your lunch and come and join us to discuss the learning. You can book your place at

<http://cheshirewestlscb.org.uk/training/>

To read the full Serious Case Review reports and other case review summaries please visit our website [Case Review](#) page.



WHAT'S NEW

Ofsted have published its updated guidance [Inspecting safeguarding in early years, education and skills \(August 2016\)](#). It places a clear requirement on these settings to ensure that:

- 1) During term time, or when the setting is in operation, the designated safeguarding lead or an appropriately trained deputy is available during opening hours for staff to discuss safeguarding concerns;
- 2) Ensuring that the designated safeguarding leads should undergo child protection training every two years

If you are concerned about your setting access to training to enable you to fulfil this requirement, you can contact: lscbtrainingandevents@cheshirewestandchester.gov.uk

Department of Education (DfE) have revised their July 2016 guidance for schools and colleges, [Keeping Children Safe in Education \(September 2016\)](#)

There are a number of changes in the document, some significant ones include:

- 1) In addition to regularly updated training an added expectation is that staff receive regular safeguarding updates, at least annually, to provide them with relevant skills and knowledge to safeguard children effectively.
- 2) Updated guidance to reflect the mandatory reporting requirement for teachers regarding Female Genital Mutilation.
- 3) New paragraph added to emphasise the harmful behaviours linked to safeguarding issues that can put children in danger.
- 4) New paragraph providing information on the virtual school head and what the relationship should be with them.

If you have any questions about the content of the revised guidance please contact the Safeguarding Children in Education Team (SCiE) via SCIE@cheshirewestandchester.gov.uk

New theme for joint targeted area inspections

Ofsted has announced that the theme for the joint targeted area inspections (JTAI) to be carried out from September 2016 to March 2017 will be the response to children living with domestic abuse. Guidance for inspectors has been published. [Guidance for joint targeted area inspections on the theme: children living with domestic abuse \(PDF\)](#)